

Abetter LIMS DNA

## Your Expert Software for forensic molecular biology

An expert module of  
Abetter Forensic Solution

### LIMS in Forensics

This expert module for your special needs in forensic molecular biology is available as powerful add-on of Abetter Case Management.

#### Effective analysis and documentation

Abetter LIMS DNA supports you in sampling forensic materials and documenting test results. The samples are successively linked to the forensic materials to give you a complete overview of the status of each law case.

#### High-throughput sampling

Create specific workflows to process your samples with high-throughput analysis. For the authorization of reagent lots and laboratory devices, service intervals and system checks can be managed.

#### Standardized interfaces to your laboratory devices

- > ABI 3130/ 3130 XL/ 3500/ 3500 XL
- > ABI PRISM®310
- > ABI 7500 Real-Time-PCR-System
- > Tecan HID EVolution
- > Hamilton Genomic STARlet™
- > ABI Veriti™ 96-Well Thermal Cycler
- > Roche LightCycler® 96 Instrument
- > Qiagen QIAgility
- > Qiagen QIASymphony
- > SHIMADZU MCE-202 MultiNa

### Targeting Forensic Molecular Biology

Analyze .fsa/.hid-files and edit the data in electropherograms. The integrated analysis allows you to normalize quantitative results.

#### DNA-profiling

Abetter LIMS DNA supports you in creating DNA-Profiles of your sample and performing mixture analyses. When you are used to work with GeneMapper use the quick and easy data import for your results.

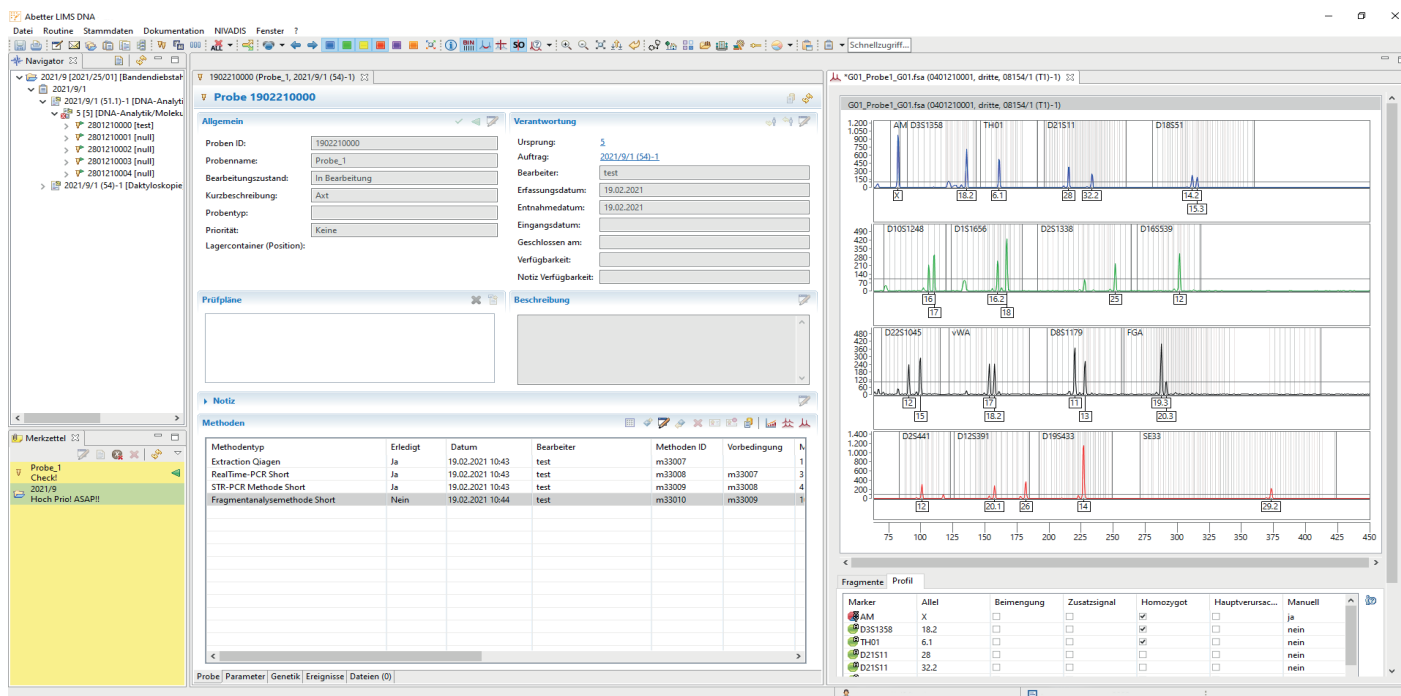
#### All-in one solution for forensic biostatistics

Save yourself stand-alone solutions for forensic biostatistics. Import population data and directly calculate in the software:

- > Identity probability (ID)
- > Random Man Not Excluded (RMNE)
- > Likelihood Ratio (LR): binary and semi-continuous
- > Kinship analysis incl. pedigree configurator

#### Quality and reliability

Data security, documentation and seamless audit trails are essential for your work with crime materials. The software supports you with the ISO 17025. Sensitive personal data for single users or business units can be anonymized.



## More functions with add-ons

### SNP profiles

Import SNP profiles (even mtDNA) to a sample.

### Manual sample comparison

Compare traces with reference samples in a sample matrix. Use profile data and electropherograms of a sample for your decision-making process. The result view can be customized individually.

### Sample comparison against a separate database

Automatize the comparison between DNA profiles. Import profiles in a separate data base, to compare a profile from Abetter LIMS DNA with the whole database. These profiles can be deleted any time. The search for matching profiles is based on guidelines of the ENFSI DNA working group (2017). Additionally, searches for potential relatives up to the third degree of kinship are possible.

### Result interpretation

With Abetter LIMS DNA pre-analyses, quantification results and electropherograms of a sample are evaluated immediately. The main contributor and the mixtures ratio are calculated automatically.

### Accounting

Furthermore, Abetter LIMS DNA supports your accounting. Summarize all costs for a case in one invoice and work efficiently by saving costs and number of consumables in templates.

### Lab process control

Keep track on expiry dates and supply quantities of reagents and lots. For permanent backtracking search for samples processed with a specific lot or device.

### Likelihood Ratio (Fully continuous model)

Calculate the Likelihood Ratio with fully continuous methods. The graphic interface of the calculation facilitates the analysis of results. Use the integrated algorithm to divide a mixture into its contributing profiles.



**Do you want to learn more about Abetter LIMS DNA?**

> Write us: [info@qualitytype-forensics.com](mailto:info@qualitytype-forensics.com)

> Call us: +49 351 8838 2800



Our quality management system is certified according to ISO 9001:2015.

Status of information: 07/2025  
Subject to changes and errors

Read more at  
[www.qualitytype-forensics.com](http://www.qualitytype-forensics.com)

